



SUMMER BBQ

**RPGC MEMBERS AND FAMILIES ARE INVITED TO
THE CLUB'S SUMMER BBQ**

to be held on

SATURDAY JULY 4TH

in

CAPTAIN RICHARD OWEN'S GARDEN

at

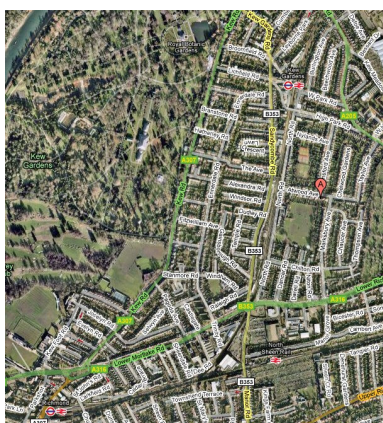
13, ATWOOD AVENUE, KEW

(see map and directions below)

Doors open at **3pm** ; cooking starts at **4pm**

*Sausages, Burgers, Kebabs, Salads, Bread, Buns, Condiments and
Soft Drinks provided.*

Bring a bottle and any other meats or fish you want to BBQ



DIRECTIONS

By Car

(i) Approach by A315 (Chertsey Road) and turn left down North Road immediately beyond the "Sainsbury's roundabout", then 3rd right into Atwood Avenue.

(ii) Approach by A205 (South Circular) and turn into Taylor Avenue (which becomes Atwood Avenue).

**By
Underground**

Kew Gardens Station (District Line) – 6 mins walk

By Train

North Sheen Station (SWT) – 10 mins walk